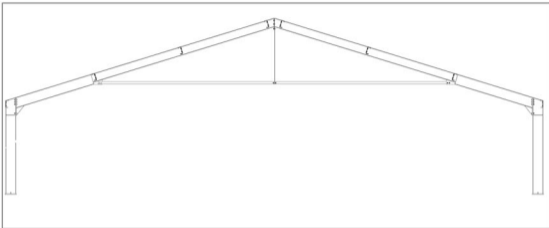




SPEROTTO

## PFT



### SPECIFICATIONS

<b>Width</b>	12 - 14 m
<b>Height to eave</b>	2,20 - 2,50 - 2,70 - 3,00 - 3,50 m
<b>Columns pitch</b>	3 m
<b>Slope</b>	17° = 30%
<b>Live load on roof</b>	From 90 to 430 Kg/m <sup>2</sup>
<b>Wind (horizontal)</b>	80 Kg/m <sup>2</sup>